

**TISSUE**

**CONTENTS**

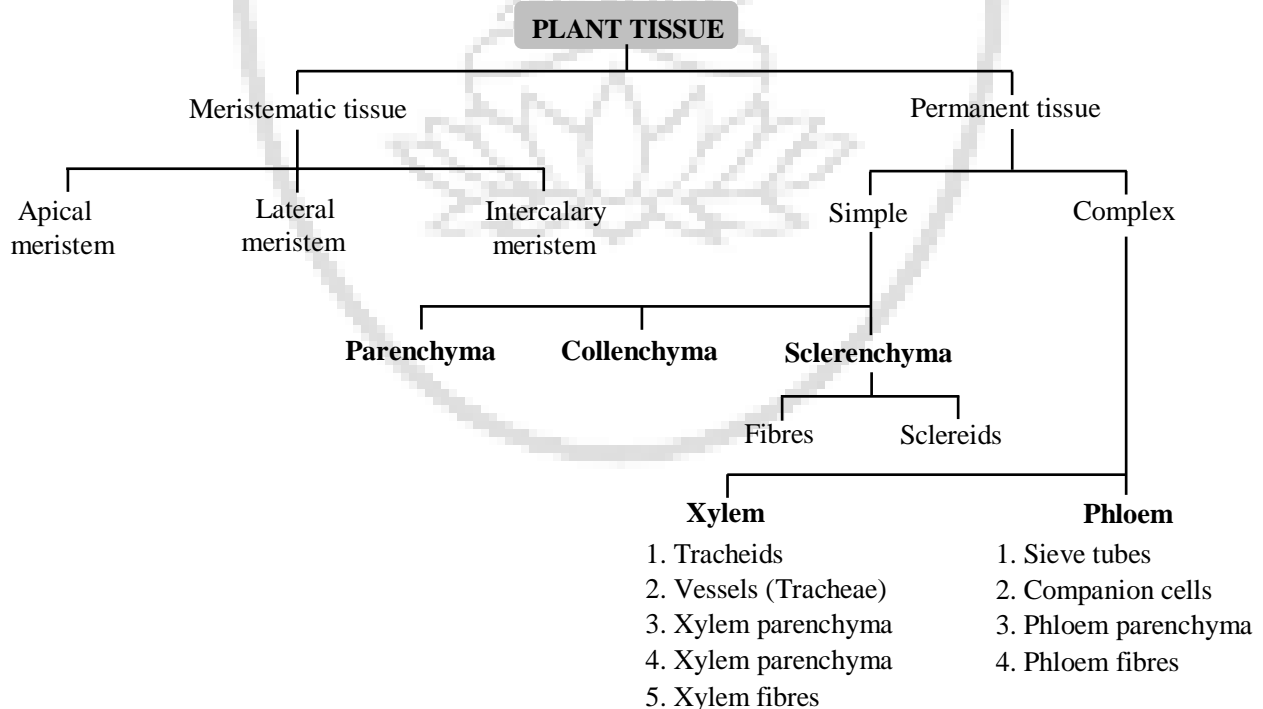
- Tissue
- Plant Tissue
- Classification of Plant Tissue
- Animal Tissue
- Classification of Animal Tissue

➤ **TISSUE**

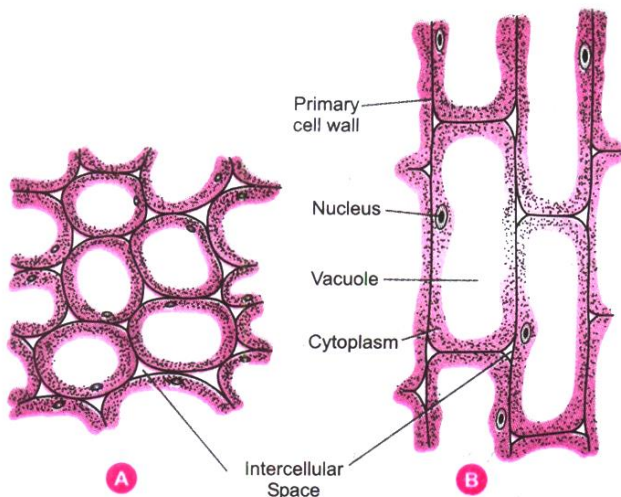
"A tissues may be defined as a group or collection of similar or dissimilar cells that perform a common function & have a common origin."

➤ **PLANT TISSUE**

◆ **Classification of Plant Tissues :**







**Figure : PARENCHYMA; A-TRANSVERSE SECTION  
B-LONGITUDINAL SECTION**

- The parenchyma tissue is composed of living cells which are variable in their morphology and physiology but generally having thin walls and a polyhedral shape and concerned with vegetative activities of the plant.
- They have intercellular spaces between them.
- They act as storage for food and water.

### Types of Parenchyma :

#### Aerenchyma :

- In hydrophytes, the intercellular space between cells becomes wide & filled with air.
- Such a parenchymatous tissue having large air spaces is called Aerenchyma.
- These help in gaseous exchange and provide buoyancy to the plant.

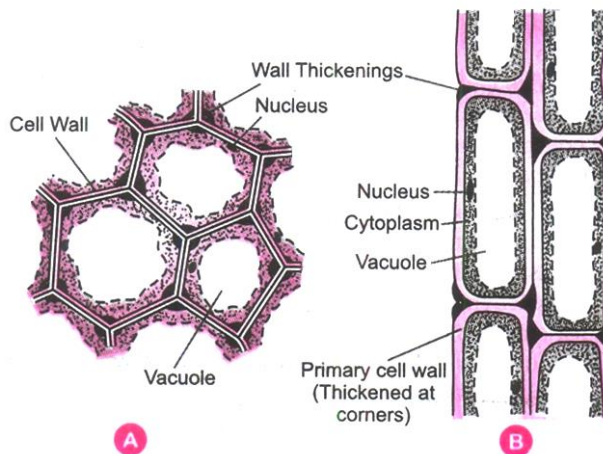
#### Chlorenchyma :

- When parenchyma is richly supplied with chloroplasts, it is called chlorenchyma.
- They are found in leaf mesophyll, sepals, phylloclades, phyllodes, cladodes etc. It is photosynthetic in function and possesses chlorophyll.

#### Collenchyma :

- It was discovered and coined by Schleiden (1839).
- The cells are living with intercellular space in between the cells or junctional places filled with cellulose and pectin.
- Generally they are longer than parenchyma.
- Usually they are known as living mechanical tissue owing to their supportive functions.
- It provides flexibility and strength to young plant organs.

#### Sclerenchyma :



**Figure : COLLENCHYMA; A-TRANSVERSE SECTION;  
B-LONGITUDINAL SECTION**

- They were discovered and coined by Mettenius (1805).

- The cells are long, narrow, pointed at ends, thick walled and lignified. They are the dead cells.
- It impart hardness to plant parts and give mechanical strength.

### ◆ Protective Tissue :

- It includes epidermis and cork.

#### Epidermis :

- It is usually present in the outermost layer of the plant body such as leaves, flowers, stem and roots.
- Epidermis is one cell thick and is covered with cuticle.
- Cuticle is a water proof layer of a waxy substance called cutin which is secreted by epidermal cells.
- The main function of epidermis is to protect the plant from desiccation and infection.

### ◆ Cork :

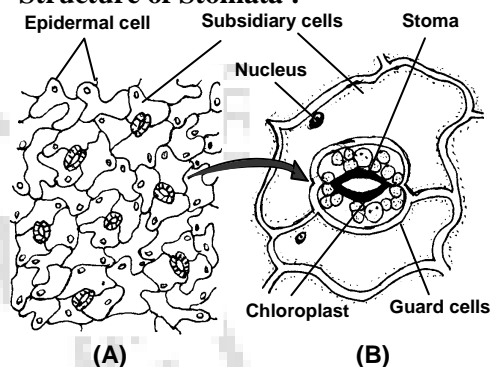
- As roots and stem grow older with time (increase in girth), tissues at the periphery become cork cell.
- Cork cells are dead cells and they do not have any intercellular spaces.
- The walls of cork cells are heavily thickened by the deposition of an organic substance (a fatty substance), called suberin.
- Cork is protective in function. cork cells prevent desiccation (loss of water from plant body), infection and mechanical injury.
- Cork is produced by cork cambium commercially it is obtained from oak (*quercus suber*).
- Cork is used for making insulation boards, sports goods, bottle corks etc.

### ◆ Stomata :

- Epidermis of a leaf is not continuous at some places due to the presence of small pores, called stomata.

- Each stomata is bounded by a pair of specialised epidermal cells called guard cells.
- The stomata allows gaseous exchange to occur during photosynthesis and respiration.

### ◆ Structure of Stomata :



**Figure : (A) LOWER EPIDERMIS OF A LEAF TO SHOW STOMATA (B) STRUCTURE OF ONE STOMATA**

#### Opening & Closing of Stomata :

- Stomata opens in presence of light, at high temperature & at low CO<sub>2</sub> concentration.
- When guard cells becomes **turgid** stomatal pore **opens**, while when they becomes **flaccid** stomatal pore **closes**.
- Due to **endo-osmosis** guard cells becomes **turgid** while due to **exo-osmosis** guard cells becomes **flaccid**.
- Due to increase in the amount of osmotically active sugars in guard cells, their osmotic pressure increases and water enters inside the cells increasing the turgidity of cells and hence stomata opens.
- When amount of sugar decreases, stomata closes. Several theories have been proposed by the scientist to explain the opening and closing of stomata.

### ◆ Complex Permanent Tissues :

- A complex tissues can be defined as a collection of different types of cells that help in the performance of a common function.
- The important complex tissues in vascular plants are xylem and phloem. Both these together called as vascular tissues.



- Both these tissues are an assemblage of living and dead cells and may be primary or secondary, depending upon their mode of origin.
- Complex tissue transport water, mineral salts (nutrients) and food material to various parts of plant body.

### **Complex tissues are of following two types :**

#### ◆ **Xylem :**

- Its main function is conduction of water and mineral salts from root to the top of plant.
- Primary xylem elements originate from procambium of apical meristem.
- Secondary xylem elements originate from the vascular cambium of lateral meristem.
- The xylem elements are of 4 types : xylem tracheids, vessels, fibers and parenchyma.

#### **Xylem Tracheids :**

- These are lignified and dead cells with bordered pits.
- They help in conduction of water in pteridophytes and gymnosperms and provide mechanical support plants.

#### **Xylem Vessels :**

- The cells are long and tubular with lignified cell wall.
- The cross wall (end wall) at both the ends dissolves and form a pipe like channel.
- They help in ascent of sap in angiosperms.

#### **Xylem Fibers :**

- Long and narrow sclerenchymatous fibers with tapering end. The wall is heavily lignified leaving a very narrow Lumen.
- It provides tensile strength and mechanical strength.

#### **Xylem Parenchyma :**

- They are thin walled living cells present in both primary and secondary xylem.
- They store food materials.

#### ◆ **Phloem :**

- The dead matter in them is known as bast.
- Its main function is conduction of food material from leaves to other plant parts.
- The phloem elements are of four type : Sieve tubes, Companion cells, Fibres and paranchyma.

#### **Sieve Tubes :**

- These are living but lack nucleus at maturity.
- Cell wall is thin and made up of cellulose.
- The transverse walls of sieve tube form sieve plate.
- They help in conduction of food material.

#### **Companion Cells :**

- The cells are living, thin walled, narrow and found attached to the lateral side of sieve element.
- They are absent in pteridophytes and gymnosperms.
- They support the sieve tube in transport of food.
- These are living and thin walled cells.
- They are absent all monocots and some dicots.

#### ◆ **Phloem Fibers (bast fibers) :**

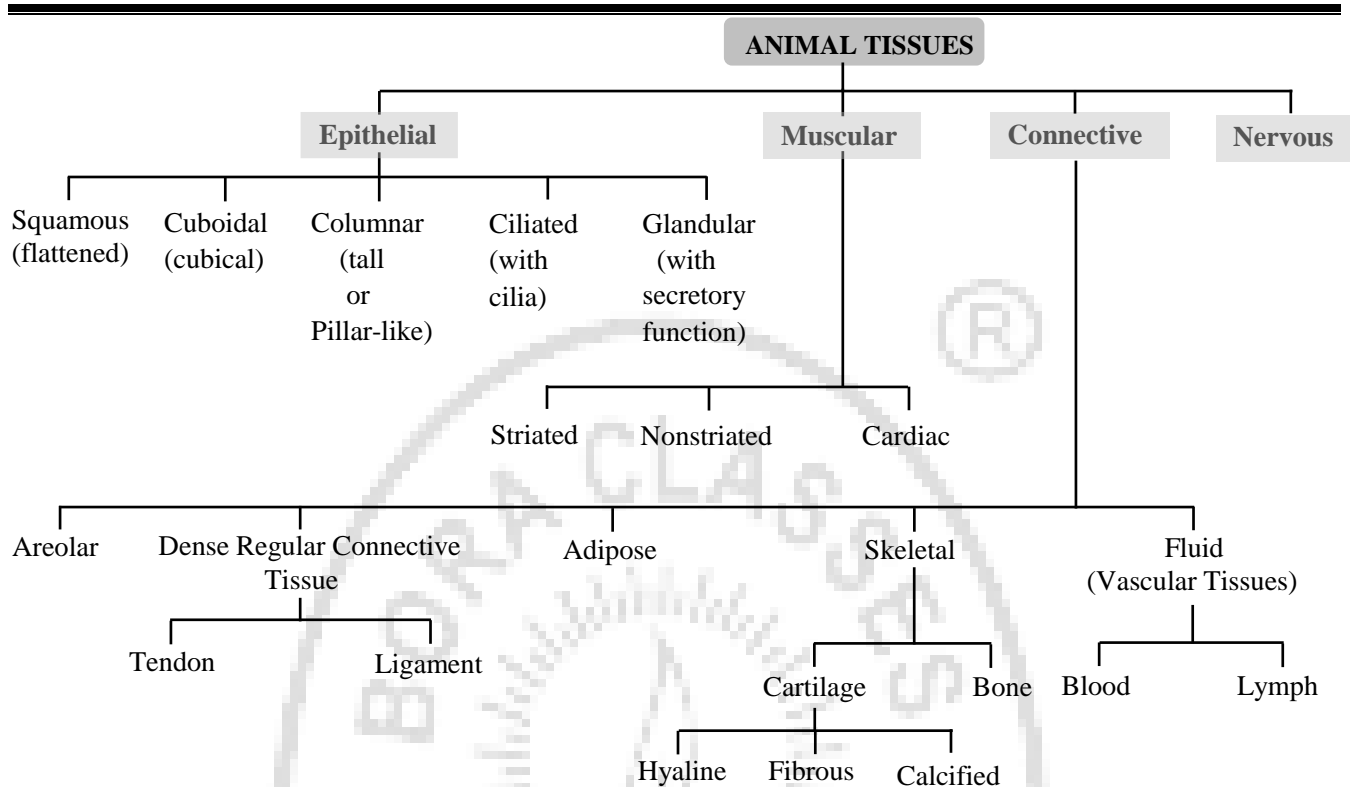
- These are sclerenchymatous fibers having thick wall and narrow Lumen.
- They provide mechanical support to the plant.

#### ◆ **Phloem Parenchyma -**

- The chief function of parenchyma is to store food material and other substances like mucilage, tanins and resins.

### ➤ **ANIMAL TISSUE**

#### ◆ **Classification of Animal tissue :**



### ◆ Epithelial tissue :

- Epithelial tissue is as simple as a protective covering.

#### Function of epithelial tissue:

- Epithelial cover the body surface as an outer layer of skin and provide protection to the underlying tissues from mechanical injury, drying up, entry of germs (viral or bacterial pathogens), and harmful chemicals.
- Epithelia forms inner lining of mouth, alimentary canal and other internal organs inside the body and protect these organs.
- Epithelial lining of the intestine absorbs water and digested food.
- Epithelial tissues help in the elimination of nitrogenous and other waste products.

- Epithelial lining of the cavities give rise to glands that provide valuable secretions such as mucus, gastric juice, etc.

### ◆ Type of epithelial tissue :

#### ◆ Squamous epithelium :

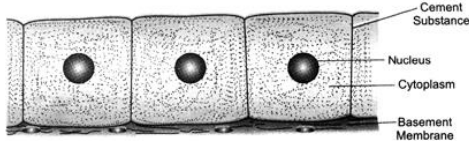
- Simple squamous epithelial cells are extremely thin and flat and form a delicate lining. The oesophagus and the lining of the mouth are also covered with squamous epithelium.
- The skin, which protects the body, is also made of squamous epithelium.

#### ◆ Cuboidal epithelium :

- **Structure.** This epithelium consists of cube-like cells which are about as tall as wide. The outline of cells is polygonal in surface view and square in section.



- **Occurrence.** The cuboidal epithelium lines the small salivary ducts, pancreatic ducts, sweat glands, salivary glands and thyroid glands. It also covers the ovaries and lines the sperm-producing tubules.
- **Function.** It helps in protection, secretion, absorption, excretion and gamete formation.

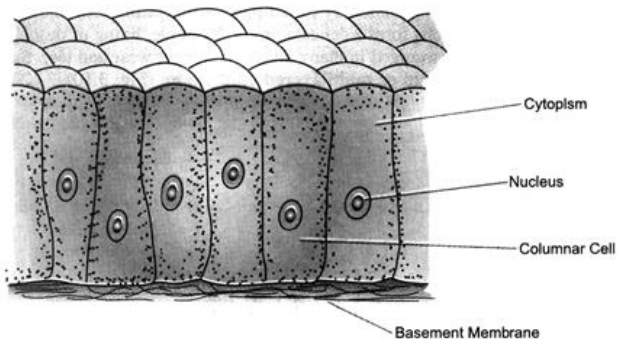


**Figure : CUBOIDAL EPITHELIUM**

- Cuboidal epithelium (with cube-shaped cells) forms the lining of kidney tubules and ducts of salivary glands, where it provides mechanical support.

### ◆ Columnar epithelium

- This epithelium consists of tall or pillar-like cells that are much taller than wide. The nuclei are generally elongated along the long axis of cells.
- **Occurrence.** The columnar epithelium lines the stomach, intestine and gall bladder. It also lines mammary gland ducts and parts of urethra.

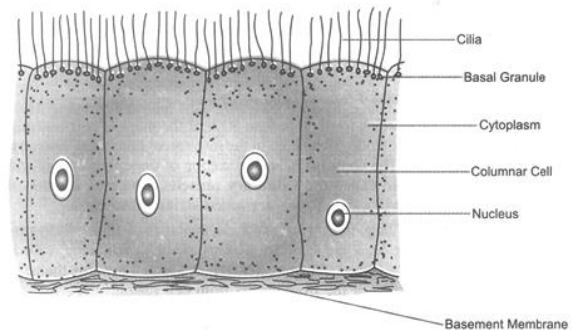


**Figure : COLUMNAR EPITHELIUM**

- **Function.** It helps in protection, absorption and secretion. Columnar epithelium of intestine is specialized for the absorption of water and digested food.

### ◆ Ciliated epithelium :

- **Structure.** This epithelium consists of cuboidal or columnar cells that bear cilia on their free surfaces. A cilium is fine, vibratile cytoplasmic outgrowth that arises from a minute basal granule.
- **Occurrence.** Cuboidal ciliated epithelium lines certain parts of urinary tubules of the kidney and sperm ducts. Columnar ciliated epithelium lines the nasal passages, oviducts (fallopian tubes), terminal bronchioles and ventricles of the brain.

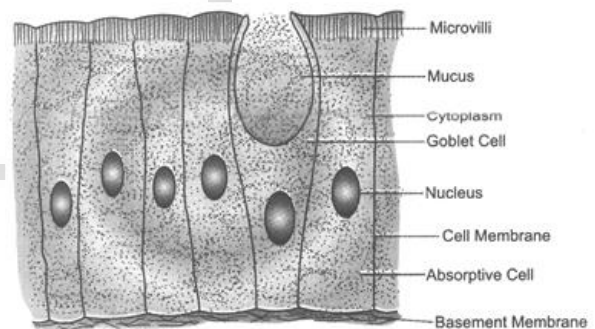


**Figure : CILIATED COLUMNAR EPITHELIUM**

- **Function.** This epithelium helps in the movement of mucus, urine, eggs, sperms and cerebrospinal fluid in a particular direction.

### ◆ Glandular epithelium :

- This epithelium consists of columnar cells modified to secrete chemicals. It lines the glands such as gastric glands, pancreatic lobules, intestinal glands, etc.

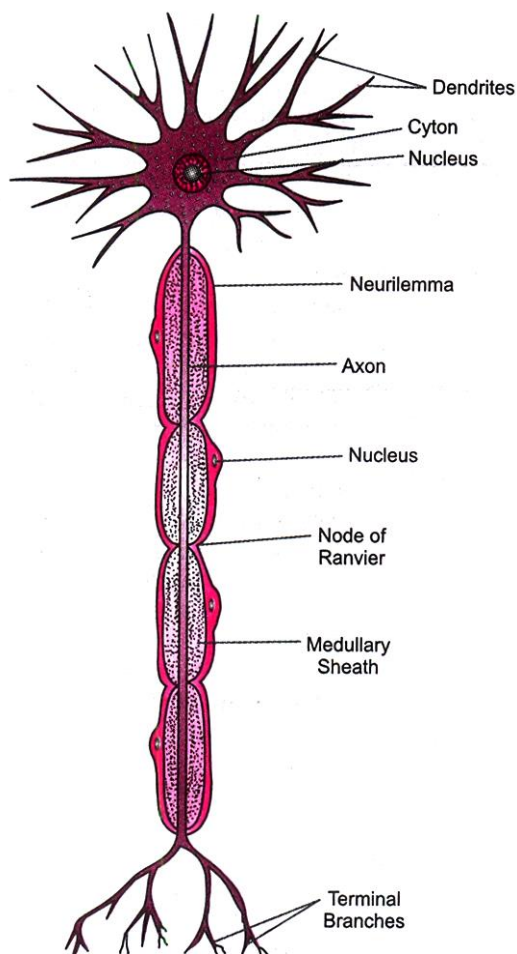


**Figure : GOBLET CELLS IN COLUMNAR EPITHELIUM**

## ◆ Nervous Tissue :

- The nervous tissue, which contains densely packed nerve cells, called **neurons** (Gk. *neuro* = nerve), is present in the brain, spinal cord and sense organs. The neurons are specialized for conduction of nerve impulses. They receive stimuli from within or outside the body and conduct impulses (signals) which travel from one neuron to another neuron. Each neuron is composed of the following three parts.

- Cyton or cell body.** The cell body contains the major concentration of the cytoplasm and the central nucleus of the neuron. The cell body also contains **Nissl's granules**, which are groups of ribosomes and rough endoplasmic reticulum.
- Dendrons.** These are short much-branched and tapering projections arising from the cell body. The dendrons are further branched into dendrites. They provide a large surface area for synaptic connections with other neurons. They conduct nerve impulses towards the cell body.
- Axon (Nerve fibre).** The axon is a long cylindrical process of uniform diameter that arises from the axon hillock of the cyton. It shows fine branching at the terminal end. Each branch ends in a swollen structure, called synaptic knob or **bouton**. The axons carry impulses away from the cell body to other neurons. The synaptic knobs of terminal branches of neuron are connected with dendrite branches of an adjacent neuron. Each such junction, in fact, has minute gap called synapse. It is meant for the transmission of nerve impulse from one neuron to the other.



**Figure : A NEURON (NERVE CELL AND NERVE FIBRES )**

## ◆ Muscular Tissue :

- Locomotion and movements are due to muscular tissues contain highly contractile muscle cells.
- It is made up of muscle fibres.
- On the basis of their structures and functions, they can be divided as striated, unstriated and cardiac muscles.
- Muscle is a contractile tissue which brings about movements, regarded as motors of the body.





- Muscle cells are elongated slender like cells and called muscle fibres.

- The muscles are of three types : as compared below :

Characteristics	Striped	Unstriped	Cardiac
<b>Location</b>	Occur in the body wall, limbs, tongue, pharynx and beginning of oesophagus	Occur in the wall of hollow viscera, iris of the eye and dermis of the skin.	Occur in the walls of heart, pulmonary veins and superior venacava.
<b>Other names</b>	Also called striated, skeletal and voluntary muscle fibres	Also called non-striated, smooth, visceral and involuntary muscle fibres.	Also called heart muscle fibres.
<b>Shape</b>	Cylindrical	Spindle	Cylindrical
<b>Action</b>	Voluntary	Involuntary	Involuntary
<b>Light &amp; Dark bands</b>	Present	Absent	Absent
<b>Branching</b>	Absent	Absent	Present

#### ◆ **Connective Tissue :**

- Connective tissues of animals serve the functions of binding and joining one tissue to another (i.e. connecting bones to each other, muscles to bones etc.) forming protective sheath and packing material around the various organs separating them so that they do not interfere with each other activities, Carrying materials from one part to another in the body, forming a supporting framework of cartilage and bones for the body etc.

#### • **Types of connective tissue :**

The connective tissues are of *five* major types : -

- (i) **Areolar tissue (Loose connective tissue)**
- (ii) **Dense Regular connective tissue**
- (iii) **Adipose tissue**
- (iv) **Skeletal tissue**
- (v) **Vascular tissue (Fluid).**

#### (i) **Areolar tissue :**

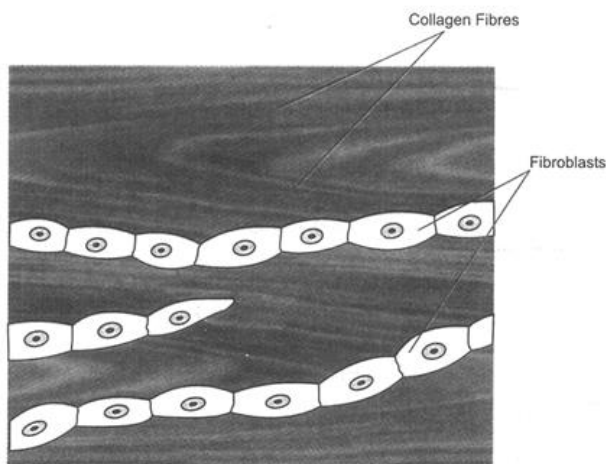
- The areolar tissue is also known as **loose connective tissue**. It is most widely distributed connective tissue in the animal body. It consists of a transparent, jelly-like sticky matrix containing numerous fibres and cells and abundant mucin. The fibres are mostly of two types : (a) **White collagen fibres**. They are made up of a protein

called collagen, which on boiling with water changes to gelatin, and (b) **yellow elastic fibres**. They are formed of a protein called elastic. Collagen fibres provide flexibility and strength whereas elastic fibres provide elasticity.

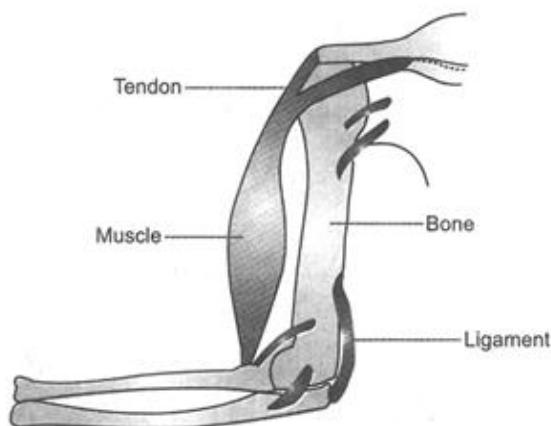
- The areolar tissue is connective in function. It fixes the skin with the muscles, fills the spaces inside the organs, Attaches the blood vessels and nerves with the surrounding tissues, fastens the peritoneum to the body wall and viscera. It is commonly called "**Packaging tissue**" of the body. Examples, bone periosteum, muscle perimysium, nerve perineurium, etc.

#### (ii) **Dense regular connective tissue :**

- Dense regular connective tissue consists of ordered and densely packed fibres and cells. The fibres are loose and very elastic in nature. They are secreted by the surrounding connective tissue cells. This tissue is the principal component of tendons and ligaments.



**Figure : DENSE REGULAR CONNECTIVE TISSUE**



**Figure : ATTACHMENT OF TENDONS AND LIGAMENTS**

(a) **Tendon** : Tendons are cord-like, very tough, inelastic bundles of white collagen fibres bound together by areolar tissue. The cells present in the tendons are elongated fibroblasts which lie in almost continuous rows here and there. The tendons connect the skeletal muscles with the bones.

(b) **Ligaments** : Ligaments are cords formed by yellow elastic tissue in which many collagen fibres are bound together by areolar tissue. The fibroblasts are irregularly scattered. This tissue combines strength with great flexibility. The ligaments serve to bind the bones together.

**Difference between tendon and ligament :**

Tendons	Ligaments
1. Tendons are very tough and inelastic.	1. Ligaments are elastic.
2. They connect the skeletal muscles with the bones.	2. Ligaments connect bones to other bones at joints.
3. Tendons are made up of white fibrous tissue. Yellow elastic fibres are, however, absent.	3. Ligaments are made up of yellow elastic fibres. The white fibres also occur but they are very fine.
4. Fibroblasts occur in rows.	4. Fibroblasts lie scattered.

**(iii) Adipose tissue :**

- Adipose is primarily a fat storing tissue in which the matrix is packed with large, spherical or oval fat cells (or **adipocytes**). Each fat cell contains a large fat globule. The matrix also contains fibroblasts, macrophages, collagen fibres and elastic fibres. The adipose tissue is arranged in lobules encased in areolar tissue.

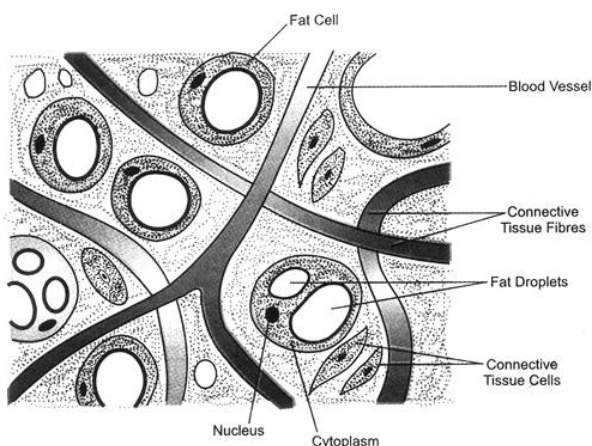
- The adipose tissue is found beneath the skin, in the covering of the heart, around the blood vessels and kidney and in yellow bone marrow. This tissue stores fat and insulates the body against heat loss. It forms a shock absorbing cushion around the kidneys and the eyeballs. Bulbber in whales is, in fact, an insulating fat body. Similarly, **hump** in camel is also rich in adipose tissue.

#### (iv) Skeletal tissue :

- Skeletal tissue forms the rigid skeleton which supports the vertebrate body, helps in locomotion and provides protection to many vital organs. There are *two* types of skeletal tissues.

(a) Cartilage, and

(b) Bone

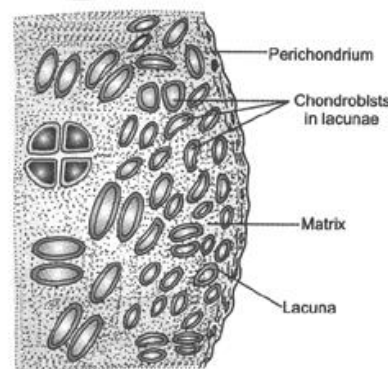


**Figure : ADIPOSE TISSUE**

#### (a) Cartilage

- **Characteristics.** Cartilage is a hard but flexible skeletal tissue consisting of living cells embedded in a matrix. The cells (chondroblasts) become chondrocytes when get surrounded within special fluid-filled chambers, called lacunae (sing. lacuna).

The lacunae (containing chondrocytes) are separated by the amorphous matrix (chondrin) that contains glycoproteins, collagen and elastic fibres. The surface of cartilage is surrounded by irregular connective tissue forming the perichondrium. Growth of cartilage occurs continuously due to multiplication of chondrocytes by mitosis, deposition of matrix within existing cartilage and from activity of the deeper cells of the perichondrium. Blood vessels and nerves are absent in the matrix.



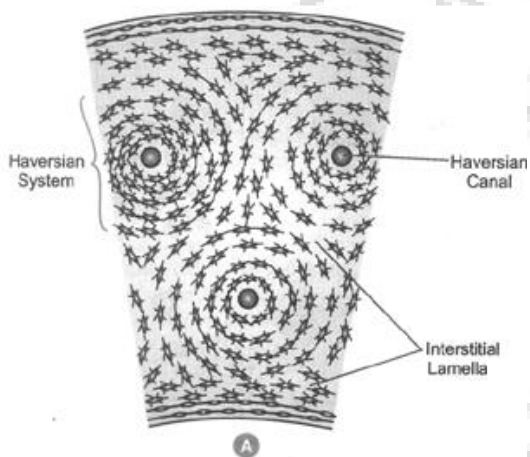
**Figure : CARTILAGE**

- **Occurrence.** This tissue occurs in very few parts of the body. In humans, the cartilage occurs at the ends of long bones, the pinnae of ears, the ends of nose, in the walls of respiratory ducts, within intervertebral discs, etc. In sharks and rays, the entire skeleton is cartilage.
- **Functions.** Cartilage is more compressible than bone. It absorbs stresses and provides flexibility to the body parts.

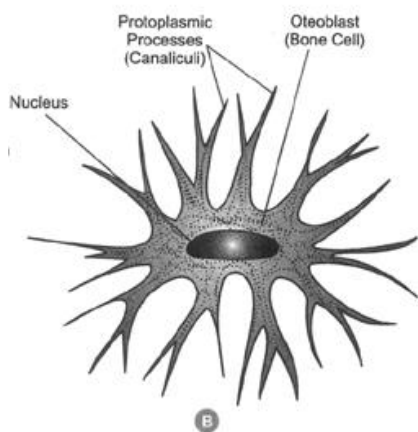
#### (b) Bone

- **Characteristics.** Bone is a very strong and non-flexible vertebrate connective tissue. A compact bone consists of living bone cells. Called osteoblasts, embedded in a firm, calcified matrix.

The osteoblasts are contained in lacunae (spaces) which are arranged in concentric circles present throughout the matrix. The lacunae are also traversed by nerves and blood vessels. The blood vessels passing through them provide nutrients to osteoblasts and help exchange of materials. The matrix is composed of about 30% organic materials (chiefly collagen fibres and glycoproteins) and 70% inorganic bone salts (mainly phosphates and carbonates of calcium and magnesium, hydroxyapatite, etc.). These inorganic salts are responsible for hardness of the bone.



**Figure : T.S. Of LONG BONE**



**Figure : OSTEOLAST**

Cartilage	Bone
1. Cartilage is soft, elastic and flexible.	1. Bone is hard, tough and inelastic.
2. Matrix of cartilage consists of entirely organic matter.	2. Matrix of bone is both organic and inorganic.
3. Cartilage do not have blood supply (except in perichondrium).	3. Bones have rich blood supply.
4. Growth of cartilage is unidirectional.	4. Growth of bone is bidirectional.

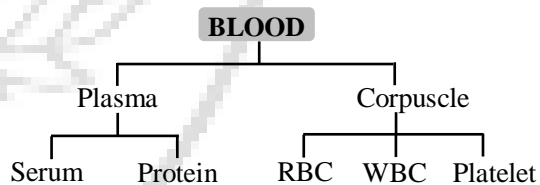
- **Functions.** Bones form endoskeleton of vertebrates. They provide levers for movement and support for soft parts of the body. Bones also protect many delicate tissues and organs.

**(iv) Fluid Connective Tissue : (Vascular Tissue)**

Fluid connective tissue links the different parts of body and maintains a continuity in the body. It includes blood and lymph.

**(a) Blood :**

- It is a fluid connective tissue.



◆ **Functions of blood :**

- Blood transports nutrients, hormones and vitamins to the tissues and transports excretory products from the tissues to the liver and kidney.
- The red blood corpuscles (RBC's) carry oxygen to the tissues for the oxidation of food stuff.
- The white blood cells (WBC's) fight disease either by engulfing and destroying foreign



bodies or by producing antitoxins and antibodies that neutrophils and harmful effects of germs.

- Granulocytes include neutrophils, eosinophils and basophils.
- Agranulocytes include lymphocytes and monocytes.
- Blood platelets disintegrate at the site of injury and help in the clotting of blood.

## (b) Lymph:

### Nature :

- Lymph is a colourless fluid that has filtered out of the blood capillaries. Red blood corpuscles and some blood proteins are absent in it. In the lymph, white blood cells are found in abundance.

### Functions :

- Lymph transports the nutrients (oxygen, glucose) that may have filtered out of the blood capillaries back into the heart to be recirculated in the body.

- It brings CO<sub>2</sub> and nitrogenous wastes from tissue fluid to blood.

## EXERCISE # 1

### A. Single Choice Type Questions

- Q.1 Large intercellular space are present in -  
(A) Epithelial tissue (B) Connective tissue  
(C) Muscular tissue (D) Nervous tissue
- Q.2 Xylem & phloem occur in -  
(A) Connective tissue (B) Cortex  
(C) Periderm (D) Vascular bundle
- Q.3 Periderm is produced by -  
(A) Cork cambium  
(B) Secondary cortex  
(C) Procambium  
(D) Vascular cambium
- Q.4 some parts of the plants are flexible due to the presence of -  
(A) Parenchyma (B) Collenchyma  
(C) Meristematic (D) Sclerenchyma
- Q.5 Which of the following tissue has dead cells ?  
(A) Parenchyma (B) Sclerenchyma  
(C) Collenchyma (D) Epithelial tissue
- Q.6 Voluntary muscles are found in -  
(A) Alimentary canal (B) Limbs  
(C) Iris of eye (D) Bronchi of lungs
- Q.7 Cartilage is not found in -  
(A) Nose (B) Ear  
(C) Kidney (D) Larynx
- Q.8 Bone matrix is rich in -  
(A) Fluoride & calcium  
(B) Calcium & phosphorus  
(C) Calcium & Potassium  
(D) Phosphorus & potassium





- Q.9** Intestine absorbs the digested food materials. What type of epithelial cells are responsible for that ?  
(A) Stratified squamous epithelium  
(B) Columnar epithelium  
(C) Spindle fibres  
(D) Cuboidal epithelium
- Q.10** Fats are stored in human body as -  
(A) Cuboidal epithelium  
(B) Adipose tissue  
(C) Bones  
(D) Cartilage
- Q.11** White fibers of connective tissue are made up of -  
(A) Elastin (B) Reticular fiber  
(C) Collagen (D) Myosin
- Q.12** Aerenchyma provides -  
(A) Flexibility of plant  
(B) Mechanical strength to plant  
(C) Buoyancy to plant  
(D) Help in floating
- Q.13** One of the following is modification of parenchyma -  
(A) Fibres found in phloem  
(B) Vessel  
(C) Tracheids  
(D) Chlorenchyma
- Q.14** Spinal cord & brain are made of -  
(A) Muscular tissue (B) Vascular tissue  
(C) Nervous tissue (D) Skeletal tissue
- Q.15** Striated muscles are -  
(A) Multinucleate & unbranched  
(B) Uninucleate & spindle - Shaped  
(C) Uninucleate & branched  
(D) Multinucleate & branched
- Q.16** The cell body of nerve cell contains a nucleus & cytoplasm & is called the -  
(A) Cyton (B) Dendron  
(C) Axon (D) None
- Q.17** Dendrites are found in -  
(A) Striated muscle  
(B) Cardiac  
(C) Neuron  
(D) Nonstriated muscle
- Q.18** Permanent tissues are derived from -  
(A) Simple tissue  
(B) Meristematic tissue  
(C) Complex tissue  
(D) Collenchyma
- Q.19** Protective tissue is -  
(A) Xylem (B) Chlorenchyma  
(C) Phloem (D) Cork
- Q.20** Adipose tissue is a type of -  
(A) Nervous tissue  
(B) Muscular tissue  
(C) Epidermal tissue  
(D) Connective tissue
- Q.21** Which of the following is an example of photosynthetic type of tissue -  
(A) Chlorenchyma (B) Sclerenchyma  
(C) Collecchyma (D) Aerenchyma
- Q.22** Mast cells are part of -  
(A) Adipose tissue (B) Areolar tissue  
(C) Cartillage (D) Lymph



- Q.25** Mucilage, tannins & resins are stored materials of -  
(A) Xylem (B) Apical tissue  
(C) Phloem (D) Parenchyma

- Q.23** Which of the following statement is false about meristematic tissue -  
(A) They contain dense cytoplasm  
(B) The endoplasmic reticulum & mitochondria are fully developed  
(C) These are the most metabolically active cells  
(D) Meristematic cells are similar in structure

- Q.24** Which of the following tissue is impermeable for water -  
(A) Ciliated columnar  
(B) Simple cuboidal  
(C) Keratinized squamous  
(D) All

## EXERCISE # 2

### A. Very Short Answer Type Questions

- Q.1** What is a tissue ?
- Q.2** Name types of simple tissues ?
- Q.3** Where is apical meristem found ?
- Q.4** What are the constituents of phloem ?
- Q.5** What are the functions of areolar tissue ?
- Q.6** Give three features of cardiac muscles ?
- Q.7** What are the function of the stomata ?

- Q.8 Name the muscle of heart ?
- Q.9 Where are intercalary meristem located ?
- Q.10 Name the fat storing tissue in human body ?

## B. Short Answer Type Questions

- Q.11 Define the meristematic tissue ?
- Q.12 What are the different types of parenchyma ?
- Q.13 Select the examples of - (a) complex permanent tissue, (b) Simple permanent tissue, (c) Connective tissue, (d) Muscular tissue, and (e) Nervous tissue, from the given list : Blood, phloem, muscle, Bones, Sclerenchyma, Neuron, Cartilage, Chlorenchyma.

- Q.14 Name the tissue responsible for the following functions in our body  
 (a) Storage of fat, (b) Movement of limbs,  
 (c) Movement of food in the alimentary canal (d) Act as barrier to keep different body systems separate.

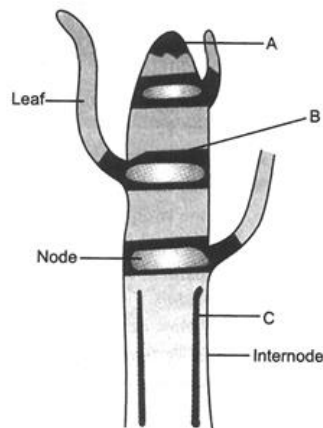
- Q.15 Where are fats stored in our body ?

## A. Long Answer Type Questions

- Q.16 What is the connective tissue ? List their types. Explain tendons and ligaments.
- Q.17 Describe the various types of protective tissues in plants.

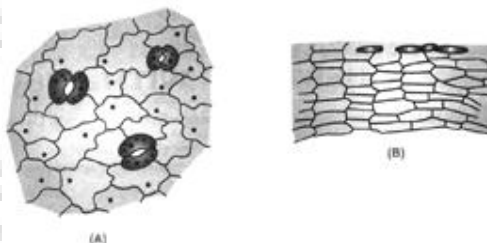
## D. Diagrammatic Type Questions

- Q.18 Observe the figure and answer the following questions :



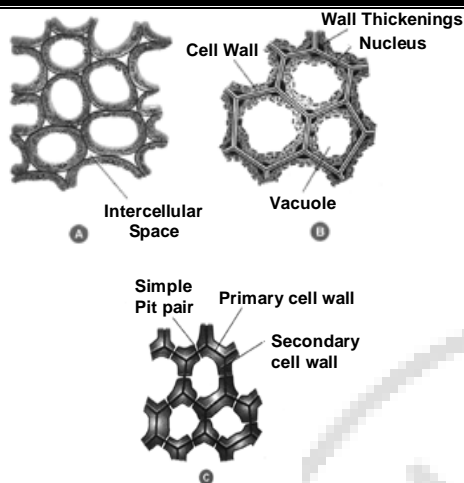
- (a) What does the figure shows ?  
 (b) Label A, B and C.  
 (c) Write the functions of A and C  
 (d) Which part is responsible for increase in growth of internode.

Q.19



- (a) Identify figures A and B.  
 (b) Which has living cells and which has dead cells ?  
 (c) Which one is impermeable and does not allow substances to pass through it.  
 (d) What is common between A and B.

Q.20 Given below are three figures A, B and C.



- Identify figures A, B and C.
- Which one is commercially exploited to get jute and hemp ?
- Which one is modified to store products ?
- Which one has deposition of lignin ?
- Which one of these provides both mechanical strength and flexibility ?

## E. Column Matching

**Q.21** Each of the tissues listed in the left hand column is related to one of the words in the right hand column.

### Column - I

- Squamous epithelium
- Elastic cartilage
- Columnar epithelium
- Granulocyte
- Agranulocyte

### Column - II

- Tip of nose
- Blood capillary
- Intestine
- Coelomic lining
- Eosinophill
- Monocyte
- Platelet
- Tip of bones

## F. Multiple Choice Type Questions

- Q.22** Aerenchyma is found in -  
 (A) Sciophytes (B) Hydrilla  
 (C) Lithophytes (D) Hydrophytes
- Q.23** Lymph can be defined as -  
 (A) Blood minus plasma  
 (B) Blood minus RBCs  
 (C) Blood minus WBCs  
 (D) Blood without RBCs
- Q.24** Which is not a component of xylem ?  
 (A) Tracheid  
 (B) Companion cell  
 (C) Sieve tube  
 (D) Wood parenchyma
- Q.25** Aerenchyma provides -  
 (A) Flexibility of plants  
 (B) Buoyancy to plants  
 (C) Mechanical strength to plants  
 (D) Help floating